



ShowerForce
Steam Shower Specialists

Have your shower assembled
Professionally

From only **£249**

To book an installation or to find out more please contact us on **0844 800 3069**
or visit our website at www.showerforceuk.co.uk

- * Fully trained Insignia assemblers
- * Only 3 hours to complete assembly on average
- * Full Product demonstration shown on completion
- * A professional service offered in many cases cheaper than a plumber
- * All work guaranteed!



This is a paid advertisement



Model: H88-842/3/5

Important—Please check your model against the amendments at the back of this booklet before attempting installation

Assembly & Fitting Instructions



Contents

Introduction	3
Tools Required	6
What's in the boxes	7
Starting the Installation	11
Sealing the shower	25
Water Connections	28
Testing for Leaks	30
Safety	31
Warranty Information	32
Spare Part	35
Troubleshooting, Help & FAQ's	36
Amendments—Important	37

For the latest fitting instructions please visit www.insigniarange.co.uk

For the latest fitting instructions please visit www.insigniarange.co.uk

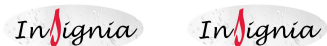
Thank you for your recent purchase of an Insignia steam shower. Please read this booklet with great care to ensure you get the best out of your build and have a shower that will last for many years to come!

Like everything, in order to obtain a first class product that will serve you well for many years, the effort and correctness put into the assembly will reflect in the quality of your finish. First remember what you need from your new item then remember this as you build. The result will only be as good as the assembly!

OUR BADGE RATING IN TERMS OF DIFFICULTY OF ASSEMBLY BASED ON CLIENT FEEDBACK

- 1 Badge = Very easy
- 2 Badges = Easy
- 3 Badges = Moderate
- 4 Badges = Harder than average
- 5 Badges = Professional skills required

This shower is rated 2 Badges



ASSEMBLY AND SIMPLE PLUMBING

THIS PRODUCT BUILD IS RATED SUITABLE FOR DIY PURPOSES PROVIDING THE CUSTOMER IS OF ABOVE AVERAGE SKILLS AND FEELS CONFIDENT IN THEIR ABILITY. ONLY YOU THE CUSTOMER WILL KNOW THIS SO BEFORE ANY ATTEMPT IS MADE TO ASSEMBLY READ THROUGH THE FOLLOWING PAGES IN DETAIL THEN DECIDE. IF YOU HAVE ANY DOUBT USE THE SERVICES OF A PROFESSIONAL. IN PICKING SUCH, ALLOW THEM TO DECIDE IF THEY ARE CAPABLE OF BUILD BY FIRST SHOWING THESE INSTRUCTIONS TO THEM. ALWAYS GET THREE QUOTES.

REMEMBER THE BEST IS NOT ALWAYS THE CHEAPEST!
REMEMBER PLUMBERS PLUMB! 90% OF THIS JOB IS NOT PLUMBING!

DUE TO THE NATURE OF THIS PRODUCT WE HIGHLY ADVISE THE PURCHASE AND FITTING OF A WATER SOFTENER

If you would like a quote to assemble this product by our own highly trained assemblers please go to:

<http://www.insigniarange.com/assembly.asp>

No telephone call required just fill in the product number and your postcode and a quote is instant. Remember this is for assembly only, no connections to your house services are made
Assemblers, assemble NOT install!

PLEASE READ ON NOW AND CHECK AGAINST YOUR ABILITY

REMEMBER:

These showers are designed to be free standing and movable from their location should you have need to replace anything. ALWAYS USE Flexible braided water inlet pipes at least a metre long (not central heating plastic type!) from house supply to the shower and again flexible waste pipe to join to your house waste. NEVER fix with rigid pipes, never fix the unit to the wall.

DURING BUILD, LIKE ALL SHOWERS CORRECT SEALING IS IMPERATIVE. ALWAYS FIT "EASY TO GET TO TAP VALVES" ON BOTH HOT AND COLD WATER. THE SAME AS A DISHWASHER OR WASHING MACHINE THIS PRODUCT SHOULD BE ISOLATED WHEN NOT IN USE

NOTE: From time to time these showers may have small differences from that of these instructions. Due to continuous improvements and upgrades, this should not cause you any inconvenience just sometimes extra common sense needs applying as changes should only be small in nature.

Tools required

1. 2 People
2. Scissors
3. Silicone Gun
4. Knife
5. Tape Measure
6. Spirit Level
7. Phillips Screwdriver
8. Drill



For the latest fitting instructions please visit www.insigniarange.co.uk

For the latest fitting instructions please visit www.insigniarange.co.uk

What's In The Boxes?

Please check with pictures, some of the items have been assembled by ourselves in order for ease of recognition as to what they are and can be used as reference in later construction

Box 1—Shower tray box

1. 1 x Tray
2. 2 x Curved rails for the top & Bottom
3. 1 x waste fitting (if purchased)

**Note: Protective film should be removed
Before starting the installation!**

Box 2

1. 1 x slim side panel
2. 1 x Large side panel



For the latest fitting instructions please visit www.insigniarange.co.uk

For the latest fitting instructions please visit www.insigniarange.co.uk

Box 3

1. Centre column. Please note yours may not be built as picture with overhead shower attached and hand shower. These are placed on the item in picture to show where they fit.
Glass rack and fittings (if supplied)

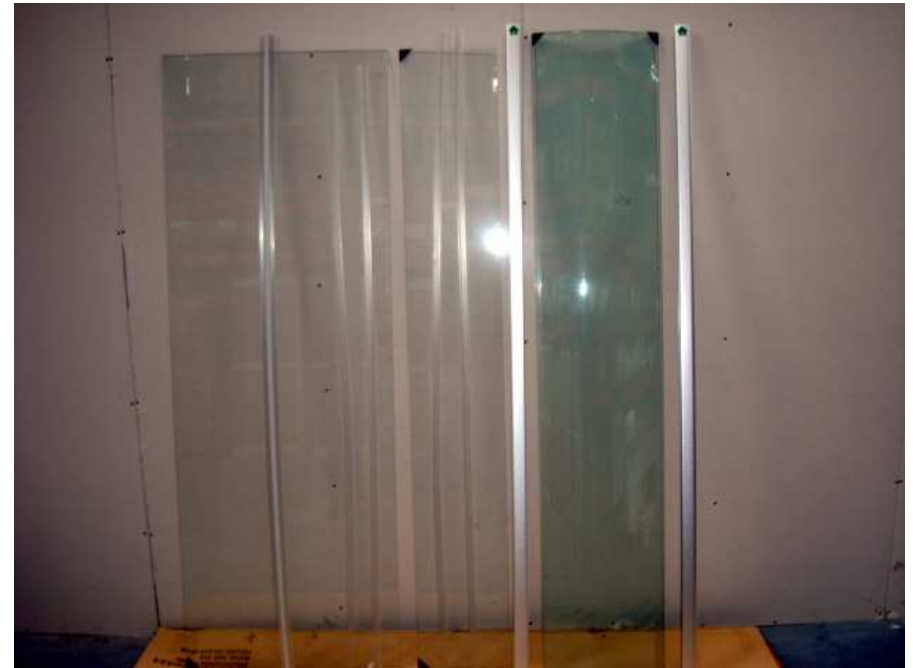


Door handle x 2 sets and wheel runner pack to include 8 x door stops (sometimes prefitted to curved rails) bag of screws or nut and bolts. 4 x glass offset retainers

For the latest fitting instructions please visit www.insigniarange.co.uk

Box 4

1. 4 x glass panels.
2. 2 x straight columns in aluminium.
2. 2 x straight anti splash door trims
3. 2 x fixed glass panel flexi seals



For the latest fitting instructions please visit www.insigniarange.co.uk

VERY IMPORTANT

Have you got everything? If not please contact your supplying dealer **now**. Remember **NEVER** book your tradesman until everything has arrived, been checked and is present. No replacement / missing parts can be obtained free of charge during or after build only within the timescale permitted (48 hours after delivery) and always **BEFORE** build.

**GOT EVERYTHING AS YOU SHOULD?
GREAT NOW FOR BUILD PLEASE READ ON!**

TO START.

Make sure **you have a clear space**, remember when finished and in place you need access to check your build and able to pull the shower out should you need to replace anything!

Take the shower tray remove all protective wrapping and fit waste. If you purchased the fitting kit it is possible this could have been already fitted in the tray hole but please note it will only have been for transport and will need sealing correctly and alignment for your house waste.

Now on the surface the shower is to finally rest, take the tray and place accordingly. Level tray with water run off slightly towards the drain. This is done by adjusting the feet fitted underside



Tray Feet



Check Levels both

For the latest fitting instructions please visit www.insigniarange.co.uk

For the latest fitting instructions please visit www.insigniarange.co.uk

When you are happy you have correct angles and the feet are adjusted correctly to the position required. Place tray into a more workable position away from the walls and giving clear working distance.

For **OFFSET SHOWER** Take either one of the tinted glass panels (Shiny side inside cabin) and the column with controls fitted offer onto tray and align panel to column. Now nut and bolt together (some models self tap screws are used) Make certain the panel is correct way up. Tip! Double your chances of never having a leak! Lightly, neatly and cleanly silicone on the waterproof seal where it will fit tub to column and glass to tub.

For **QUADRANT SHOWER** Take either one of the tinted glass panels (Shiny side inside cabin) and the column with controls fitted offer onto tray and align panel to column. Now nut and bolt together (some models self tap screws are used) Make certain the panel is correct way up. Tip! Double your chances of never having a leak! Lightly, neatly and cleanly silicone on the waterproof seal where it will fit tub to column and glass to tub. Important make sure you have correct panel to correct side of shower notice the holes in one for the hand shower fixing in picture below. **RIGHT HAND SIDE**



Quadrant hand shower on right from front

For the latest fitting instructions please visit www.insigniarange.co.uk

For the latest fitting instructions please visit www.insigniarange.co.uk



Did you notice the water anti leak seals? These are folded to tuck in-between the column and glass panel neatly. Do not fold half of it outside!! If you think about this, any other way will cause extensive leaks. You will channel the water out of the shower of course! Why not carefully silicone along the joint as you make it! It will add rigidity and improve even better sealing qualities



Notice clean crisp joint with seal inside.
Above and below



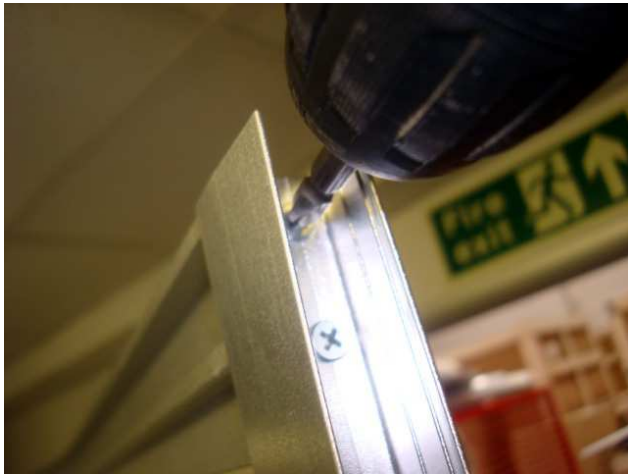
Happy with this? Joints good, not pulled out of alignment? Yes common sense really and easy to do but always check and check again. The quality you put into workmanship now will reflect the performance you will obtain over the coming years.

Now taking the second tinted glass panel repeat same operation. All good? Great! Now align to the shower tray position where all will fit when completed. You are looking for the perfect position so nothing looks out of true to the human eye.

Take the straight upright aluminium columns as below either side of tinted glass. Notice they will say "UP" on green labels. This end fits at the top.



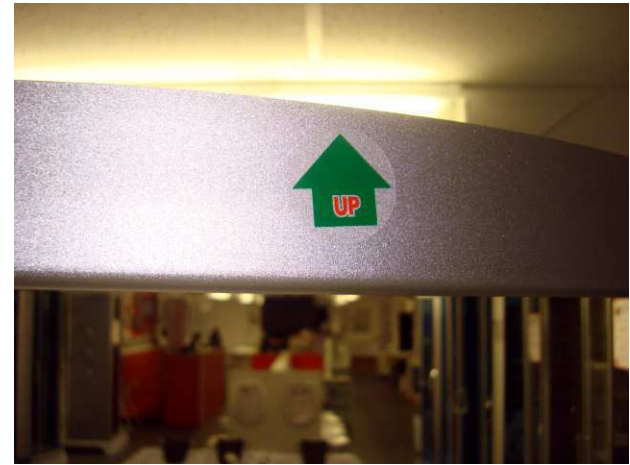
Taking one column and the curved runner marked “bottom” or with no label at all. Silicone one joint faces FULLY now screw the two parts together. Notice again waterproof seals on curve. These fit onto the tray when in place



For the latest fitting instructions please visit www.insigniarange.co.uk

Happy with this? Good!

Now repeat with other column and other end and again with curve marked “Top” You now have a fully built front supporting frame. Silicone under bottom waterproof seals and offer the newly built frame to the end of glass panels.



Top Curved rail showing “UP” Silicone joint panels to frame first. Screw frame to glass side panels as overleaf.

For the latest fitting instructions please visit www.insigniarange.co.uk



Now screw or bolt according to whatever fixture is supplied, the complete shower to the tray where holes supplied.



Assemble glass rack (if supplied) Assemble the hand shower and the overhead shower

You will now have a build as below

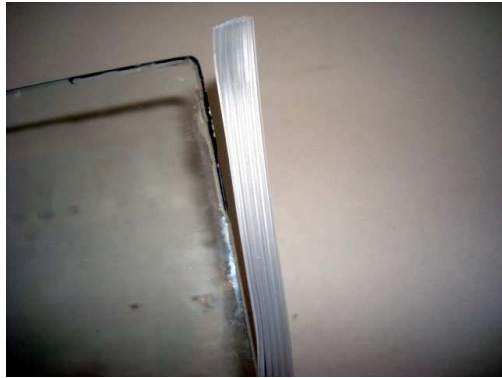


For the latest fitting instructions please visit www.insigniarange.co.uk

For the latest fitting instructions please visit www.insigniarange.co.uk

With all now complete as the above picture you need to fit the glass front fixed panels.

Taking one of these, easy to identify because they are flat with no holes in. Fit the sealing trim to one long side of the glass. Note. The sealing trim may be in one length so carefully measure and cut accordingly. To hold in place we have used clear silicone in picture but this is not a critical instruction and can be completed dry



Sealing trim being placed on glass

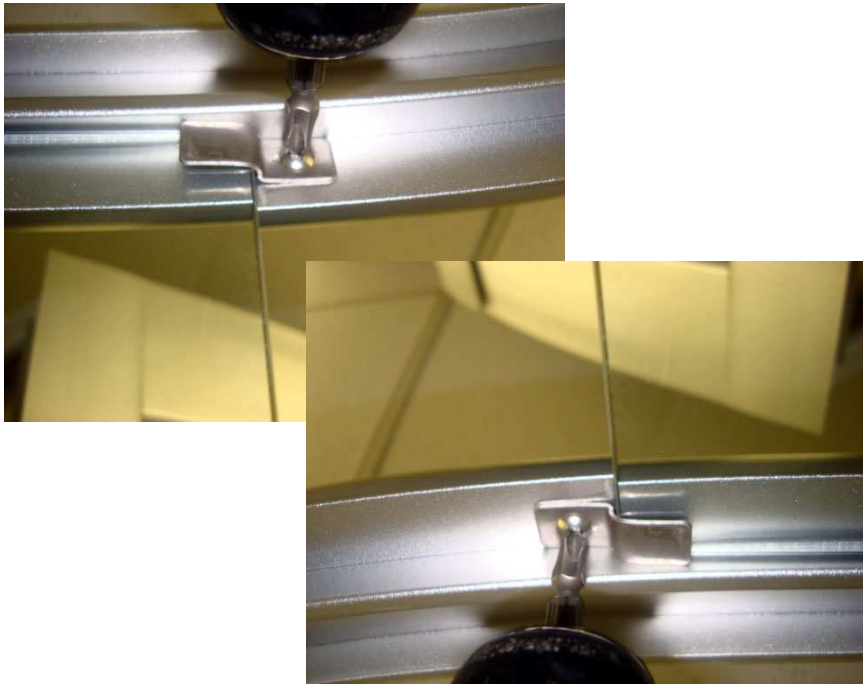
Now carefully push the trim you have just fixed on the glass into the channel supplied in the straight end column. Press home firmly until completely "home."



Above shows glass in channel neatly pressed fully in place.

Repeat same procedure the other side.

You now need to fix the glass in place. Take 4 x offset clips and screw each into holes provided in both top and bottom curves. Two in top and two in bottom.



With both front fixed glasses firmly in place now it is time to take both doors. Check you have them round the correct way. Hold both together and make sure magnets attract not repel. Fix the wheels and door handles accordingly. Note picture. The door wheels fix as shown with button type at the bottom and the button fixes on the outside. When complete lift each door carefully into top runner and then at the bottom, press buttons to allow bottom runner correct location. Two person operation for ease. On the trailing edge of each door fit the long plastic seal (if supplied) with the seal flap fitting between the door and the inner side of fixed glass panel

For the latest fitting instructions please visit www.insigniarange.co.uk



NOTE BUTTONS ON PICTURE ABOVE



With both doors in place check for smooth running operation and closure firmly magnet to magnet. Fit door stops to upper and lower curves if not already fitted by makers and attached the door handles.

Your cabin is now complete in assembly!!

For the latest fitting instructions please visit www.insigniarange.co.uk

Finally seal round the bottom of each tray with a bead of silicone



NOW AT THE REAR OF THE SHOWER Shower Water Connections

You have three (depending on model) features fitted within the shower, all are connected via the rubber reinforced pipes supplied at the rear of the shower. These are: * Back Massage Jets * Over-head Monsoon Shower Head, * Hand Held shower.

Dealing with massage jets first. REMEMBER all items fitted to the column are not finally tightened by the factory and items can also come loose in transit. Notice the jet arrangement to the rear. Tighten these or even better slacken off the nut first, carefully silicone behind jet and then retighten. Again not always required but a very prudent precaution against any future leak. Notice pipe clips to all functions, TIGHTEN THESE.



Massage jets tighten white nuts or apply sealer



Above flexi pipe leading to overhead shower. Tighten all clips and fixings. Remember to repeat operation to the hand shower connections

Pressure Requirements from your house supply.

We recommend a bar pressure between 2 and 3 bar. If you have a combi boiler system no problem should be experienced. If you have a gravity feed older type of installation (hot water tank type usually less than 1 bar) you will almost certainly need a pump. We cannot advise on which type of pump is used, location or design because all house plumbing layouts vary. This is a job for your installer /plumber. The end delivery however must fall within the scope above.

Debit Requirements.

You will need the debit capabilities of at least 10 litres per minute. Again an average combi boiler will supply this but please check if you have a gravity feed system.

Important Note Do not exceed 3 bar pressure under any circumstances. Warranty void if so as damage will occur. If combi. type supply, use a pressure reducing valve if required.

Remembering this product is free standing and designed to be pulled away from the wall, the water supply pipes and waste pipe require flexible pipes. If you purchased the fitted kit with this shower you will have the required fittings. The water supply pipes need to be at least 1 metre long and flexi braided type not speed fit type heating piping.

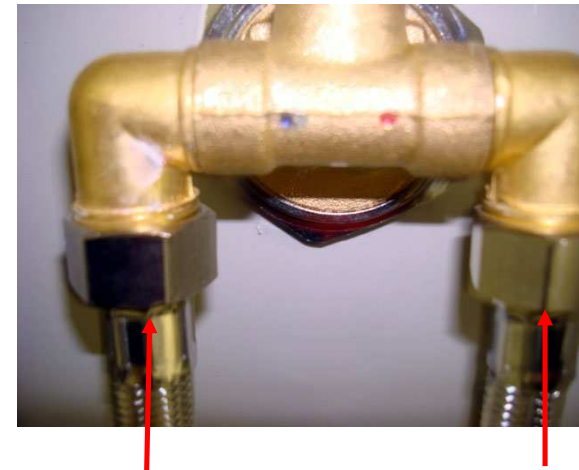
VERY IMPORTANT

Do not twist flexi braided hoses. This will shorten the lifespan and greatly affect flow.

Further to this as you would with a washing machine or dishwasher, it is highly recommended accessible water valve taps are installed to turn off the shower when not in use. This will avoid any possible flooding due to a burst pipe or connection failure in the future.

Connect house waste to flexi pipe (if optional fitting kit purchased you will have this as mentioned in first stage)

Your water connections are now complete.



Cold Connection

Hot Connection

For the latest fitting instructions please visit www.insigniarange.co.uk

For the latest fitting instructions please visit www.insigniarange.co.uk

Your completed shower should now look like this:



HIGHLY RECOMMENDED. FIT A WATER SOFTENER IF YOU LIVE IN A HARD WATER AREA!!

WHY?

All pipes and valves fitted to this produce are narrow bore which is becoming a more and more common practice. The valves inside the tap body are ceramic disc type NOT older type rubber seals. These and pipes can block VERY fast with calcium. If a supply pipe bursts because of this you could be dealing with a very large flood. IT DOES HAPPEN! Calcium attacks the flexi supply pipe usually around the nut connections first. You will first notice signs of water pressure dropping in the shower or water not getting warm enough. If this happens pull out the shower check the supply pipes by unscrewing and visually looking with the aid of a torch inside the end. Any doubt, change both! Never change one!

For the latest fitting instructions please visit www.insigniarange.co.uk

TESTING FOR WATER LEAKS

LEAVING SHOWER 24 HOURS AFTER BUILD ALLOWING SEALANT TO CURE HAVE YOU BUILT THIS CORRECTLY? FIND OUT NOW.

With all connections tight, the waste and hoses checked, jets fully sealed, your shower still around 18 inches from its designated final resting point and the silicone sealer fully cured (hence leaving for 24 hours at min) Switch on the overhead shower NOT massage jets remember these will fire water out at you and are not suitable for checking leaks as they would normally only operate when a person is fully in front of them. Just use COLD water setting as hot will make cabin misty and condensate thus the inspection becomes very difficult. Now on the OUTSIDE inspect each joint, factory seal, hose, clip, jet, from one side going round to the back and then other side finishing at the front. If you have a small leak (normally caused through insufficient sealer or air bubble on assemble. Dry area thoroughly and reseal on the OUTSIDE. Again remember where you see water may not be exactly where the leak is, it could have run round to a low point. Never seal anything inside unless you feel it necessary and make sure it is thin and neat, remember you will see this for the life of your shower! Leave to cure again and check. If all good now check shower functions, Jets for back massage, foot massage, (if you have one) and finally hand shower, check your joints to these functions at the rear again. Never use the shower until all checks have been made and the installer is 100% happy in the knowledge no leaks are present. All good? Now push your shower FROM THE BASE NEVER GLASS OR FRAME into its final resting position. Now you can shower in the knowledge that you have no leaks a job done well and long product life. Happy showering!

For the latest fitting instructions please visit www.insigniarange.co.uk

Message to tradesmen: Should you require any help or advice please call 0844 800 3069 10.00am –4.00pm. We further point out that providing this product has been built correctly and the instructions followed with particular attention to the final paragraph, the client should have been left with a 100% trouble free product. We have on occasion heard of less scrupulous tradesmen making return visits at the customers request because of various faults and charging effectively for corrections to work that should never have been required. We would expect no further charges should be made for call backs unless alien to original work carried out.



Safety precautions

Never leave children unattended in the shower or bath.
Never bath children (under 12) using whirlpool function if fitted.
Regulate the temperature of water before showering
Never allow children to use steam function unattended. This function is also not recommended for children. **ADULTS ONLY.**
If steam facility is used always be aware that with many types, the steam outlet in tub or fitted on column **MUST** be in “OPEN” position. Close after use. Failure to do so will result in crazing of acrylic due to excessive heat generated on it.
Always be aware of the steam outlet pod position. Never use in close proximity to the person using it.
Never use this shower if you have been drinking alcohol.
Never use with more than one person unless the shower is designed for this.
This product is not to be used for washing / bathing animals
Always turn power supply off after use

For the latest fitting instructions please visit www.insigniarange.co.uk

Do not use a remote control inside the shower or leave in heavy moisture areas.

Never clean your shower directly after use especially after steaming. Allow one hour or longer to cool to room temperature. Cold water on hot glass increases the risk of glass shattering and increases the risk of acrylic crazing. Never do this!

Never be tempted to investigate a fault by opening ANY electrical fitting on your appliance. No parts are reclaimable and no parts are supplied for these. All items are unit exchange only from both the manufacturers and ourselves.



Warranty information.

This product is covered against any electrical or mechanical breakdown for a minimum period of 12 months. This warranty is limited to replacement parts only as it is deemed to be a DIY product and delivered to the customer ready for assembly. No service costs are paid. In addition to items mentioned the warranty also includes any further item deemed to have suffered a defect by manufacturers or makers fault. This to include tubs, walls, roof, columns, original makers hoses, valves, computer control, transformer boxes, whirlpool pumps, chassis. **PLEASE NOTE** a further additional period of 12 months is available as an upgrade provided it is taken within 28 days from the day this product was delivered to you. For cost and enabling kindly contact Insignia on 0844 800 3069.

Your warranty starts from the day the product was delivered not the day it was originally ordered. To initialise your warranty please fill in your warranty registration card within 90 days of delivery and return to address shown or simply go on line to:

For the latest fitting instructions please visit www.insigniarange.co.uk

www.insigniarange.co.uk/warrantyreg.asp and fill out details for instant registration.

Please note: The above warranty is only implied on goods supplied and described as new. Ex demo, returned items, overstocked products sold at lower than normal price are deemed to be covered as above but with a 90 day limit.

Limitation of warranty. All products must be tested as mentioned in the instructions for the item. Water leaks are not covered as all products are made from impervious materials. Any leak found will always be resultant of sealing problems, if a fault has been identified in the structure of the shower (base cracked, column split etc) causing a leak, this must be reported at the time of initial build and test as no negotiations are entered into after the shower has been in use. Chips, dents, scratches are not deemed to be makers faults and therefore must always be reported within the 48 hour period allowed from delivery date. No replacement items will be given freely after this period and this must be borne in mind during build as all parts, are at this point, considered to have been in good condition on delivery.

Incorrect build, negligence on installers behalf, changes to manufacturers specifications, modifications, incorrect maintenance, Lime scale / Calcium build up, incorrect cleaning procedures or inadequate / spasmodic water supply contributing to parts failure and incorrect consumer use will result in voiding the agreed cover.

Please note you are not covered for consequential or incidental damage however caused relating to any product part failure. This includes but not limited to carpets, floors, ceilings, walls and other appliances. Flooding, electrical failure, water ingress can all be

avoided by following the instructions supplied with your product. Isolate your shower or bath from main electrical supply as you would your TV when not in use and again isolate water supply at taps as recommended. Your product will also last longer and you go to bed happy and safe!

Please note all terms and conditions of warranty are in addition to current merchandising laws, distance selling and consumer rights, not in place of.

For further details of warranty please follow this link www.insigniarange.co.uk/warranty.asp

To proceed with a claim you feel you might have please use the services of our dedicated service team based in France to cover not only the UK but Europe and ready to assist you in any way they can. We pride ourselves on the speed of service and our system appears to have been adopted to a lesser extent by smaller companies. We think we are number one for this service. Please go to www.insigniarange.co.uk/customerservice.asp fill out your details in the message box and just click send. You will be given a message number dedicated just to you and your product and replies are always in writing through e-mail, this way both the customer and ourselves both have records of details and nothing can be misconstrued. Reply response time is expected to be within 120 mins of initial contact. Our service team can also be reached on: customerservice@insigniarange.co.uk And for the smaller items just contact Insignia on 0844 800 3069 for on the spot advice and help.

For the latest fitting instructions please visit www.insigniarange.co.uk

For the latest fitting instructions please visit www.insigniarange.co.uk

Returned Goods

Your attention is drawn to the terms and conditions. Any returned Item must be accompanied by a return form. Using our customer service department, they will authorise this subject to conditions and offer you a returns number, NO PRODUCT can be returned without this and will be refused at the destination address. It is also very important to remember NO GOODS are accepted for return if built, used or no return number. In addition all boxes and packaging must at all times be in the same condition as it was delivered. The goods must be as new and in a position (sub. to reason of return) ready to be resold as so. Failure to adhere to this incurs costs at the senders liability.

Spare Parts

We are happy to say due to our market position, we are probably the largest stockists of all steam shower, non steam shower and whirlpool bath spares in the UK. It is rare an item is out of stock and usually on the shelf. All items are courier delivered where possible and 24 hour service in place. So you need something and out of warranty just identify it from the instructions to build, call Insignia on 0844 800 3069, tell them, pay by card over the telephone and endeavour to despatch same day.

Disclaimer.

Whilst all information given is checked and thought correct, we do appreciate human errors can from time to time creep in despite all efforts to avoid this. The instructions given are for reference only and from time to time updates or changes are made by the manufacturer without prior notice. Errors and omissions excepted (E&OE).

All build instructions are written with the consumer in mind, we do consult customers from time to time and would be interested in any feedback you may have. Can you help improve our service? Have you any tips which others may benefit from? Please call 0844 800 3069 and press for technical help when prompted. We would sincerely like to hear from you

For the latest fitting instructions please visit www.insigniarange.co.uk

IMPORTANT!

Need Help and answers now?
Then simply Download your free comprehensive
Help and Troubleshooting brochure now!

Simply visit: www.insigniarange.co.uk/help.aspx



INSIGNIA PRODUCTS

**HELP I HAVE PROBLEMS AND
NEED ANSWERS NOW!**



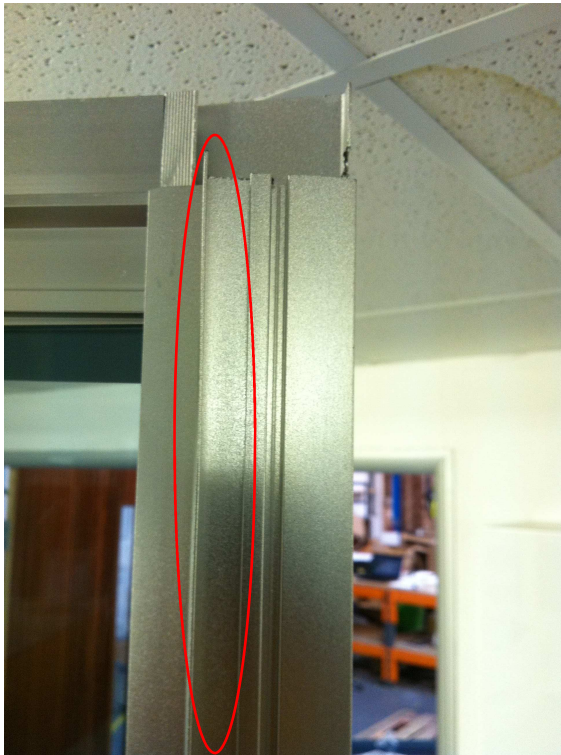
PLEASE KEEP IN SAFE PLACE

www.insigniarange.co.uk

For the latest fitting instructions please visit www.insigniarange.co.uk

Amendments

It may be apparent that you have the latest model which is a “click clack” style build. It is important to recognise this as when it comes to building the shower, once you have the tray in place you need to build the **front glass frame first** than click the rear panels in to place followed by the column last. If you fail to follow this instruction your build will be incorrect and you will have to start again! To recognise if you have the correct model please check the following:



Does your metal up-rights have a groove on the framework as shown below? If so then you Must follow the instructions above in connection with the booklet. if you do not have this groove then please follow the booklet from the beginning ignoring this amendment.

For the latest fitting instructions please visit www.insigniarange.co.uk