



Assembly Terms & Conditions

Thank you for choosing Shower Force as your recommended assemblers. In accordance with the assemblers guidelines we kindly ask that you read through the following terms and conditions and sign the box at the bottom. Once done please fax the form to 01908 579600 and once done your booking will be confirmed.

Before installation

Before the assemblers arrive you agree to the following:

1. If you have had the shower arrive it is your responsibility to ensure you have unpacked it and checked everything is ready for install. If you find any imperfections, missing items or damage this must be reported to the suppliers within 48 hours of delivery. Should you fail to follow this procedure and our assemblers arrive and the build is held up a re call out charge will apply or you could forfeit your deposit if they have to return.
2. You must make sure your bathroom is prepared ready for the installers to work it. Sufficient space around the shower is required to facilitate the build. This would include making sure the area where you want the shower sited is ready, no obstructions such as toilets, basins, soil stacks etc. We would recommend you have your plumber have all this removed in preparation. We stress under no circumstances are our assemblers allowed to move, replace or connect any plumbing up.
3. The installers have sufficient access to the bathroom, no blocked entrances or passageways which could be to danger to the assemblers. Under health and safety our assemblers may refuse to enter your property should this be the case.
4. You have sufficient power supply for the assemblers to plug in their power tools.

The day of the assembly

1. A time will be scheduled with you and our assembly team will arrive on that day. If there is any unforeseen circumstances whereby the assemblers can not get to you, be it personal or business related then neither Bath Depot nor the assemblers can be held responsible for loss of time or inconvenience caused. In the unlikely event this should happen you will be fully entitled to your deposit back or a new appointment will be rescheduled.
2. As mentioned in section 1.4 you must have power supply arranged.
3. Depending on the model of the shower it will take around 2-3 hours to complete the assembly.
4. You must ensure the shower has been sited on the same floor as your bathroom. We stress that the assemblers are not insured to carry the shower/bath up your stairs under health and safety regulations.
5. You may be required to assist the assembler where specified with holding the shower in the first phase of the build. In most cases it's a one person install and your assistance will be no longer than 5 minutes. The assembler will advise at the beginning of the build if this is the case.
6. Once the assembly is finished you will be given a demo on how the shower works including powering up the unit to show to show you how it works. Please note: we can only show you how the shower operates by the dials as the water will no be connected. Once you have been given the tutorial they will unplug the unit and leave it ready for your plumber to carry out the installation.
7. When the tutorial is complete you will be asked to sign a completion form. This will ensure you are happy with the assembly.
8. Once the form is signed you will need to settle the final part of the assemblers invoice which will be clearly stated on the completion form.
9. All Final payments are paid by way of **CASH** only

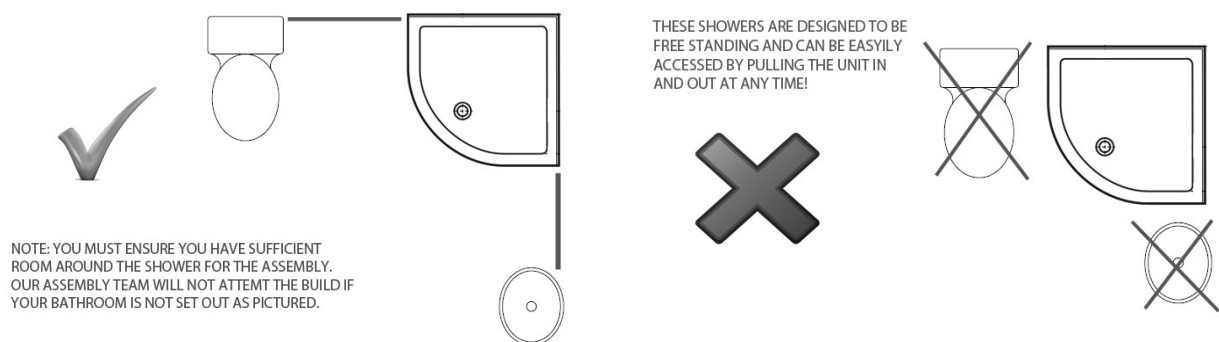
Notes for reference:

1. The assembly team only assemble the shower, they never connect the plumbing nor the electrics. This must be done by a qualified person with the appropriate certification in line with UK rules and regulations.
2. They will never deviate from the build of the shower, so please do not ask them to remove items or do anything outside of the job they are being employed to do.
3. Once the assembly is completed you are required to pay the remaining balance. Should you not be happy with any part of the assembly you must take this up with the office, no payment must be held under any circumstances. Failure to pay will result in legal action be taken.
4. You are employing the services of the assemblers NOT bath depot or any other retailer, therefore any claim made against the assemblers must be done through them direct.
5. If for any reason upon assembly there is a part failure that holds up the assembly the cost will be covered by Insignia and all recall out charges will be also covered. Any costs to the vendor will not be covered as in all cases the build can be completed it will just require a swap over of a part. In most cases the assemblers carry a large stock of spares in the van for unforeseen circumstances.
6. If a part should fail whether it's a week after the assembly or 4 years you must in the first instance contact the retailer **NOT** the assembly people. Remember you have a the total parts protection plan which covers all your parts.

Cancellation Policy

A £100 deposit is required at the time of the booking and is non-refundable under the following conditions:

1. You cancel the booking with 48 hours of the installation date.
2. You have not prepared the bathroom as set out in the guidelines below which results in a reschedule of another appointment. If this is the case another £100 deposit will be required to book a new date and time.
3. You may re-arrange your appointment free of charge anytime up to 7 days before the assembly. If you need to appoint a new time anytime within the 7 days a charge may apply according to the assembly schedule.
4. You can cancel your appointment anytime up to 7 days before the assembly date and request a full refund of your deposit should you wish to not use there services.



In accordance with the above I have read and fully understand the terms and conditions as set out by the assemblers. Should any part of the agreement be broken for what ever reason you may be liable to lose your deposit.

Signed:

Date:

ShowerForce
Steam Shower Specialists